



## 7260/INC PROOF Frog Lite

Self loading stretcher for incubators predisposed for certified fixing system




### FEATURES

Belongs to "FROG LITE" self loading stretchers range. Made of aluminium alloy to be reliable, sturdy and light. It has been designed to transport incubators on rescue vehicles. Designed without back rest, side protections and rigid platform, this stretcher has predisposition for our certified fixing device Art. 955 Proof.

Device certified according to the European harmonized safety standards UNI EN1865 - UNI EN 1789.

### MAIN FEATURES

Pediatric	
Height (cm)	83
Max loading height (cm)	66
Min loading height (cm)	60
Folded height (cm)	26
Width (cm)	56
Length (cm)	196
Length with folded trolley (cm)	167
Weight (kg)	28,5
Material	Painted aluminium
Loading capacity (kg)	250

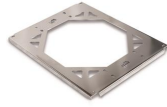
---

## ACCESSORIES

---



**955 PROOF**  
EN 1789 fixing system for Proof roll-  
in stretchers



**12048**  
Certified interface for incubator  
fixation for self loading trolleys



**12050**  
Extended trolley incubator  
interface

---